



QUICKQ & BRAINDRYVR

Four 1-Hour Webinars For Professionals & The Public

Featuring: Dr. Paul G. Swingle



Biofeedback for the Brain



Attention and Learning
Disorders



Depression and Mood
Disorders

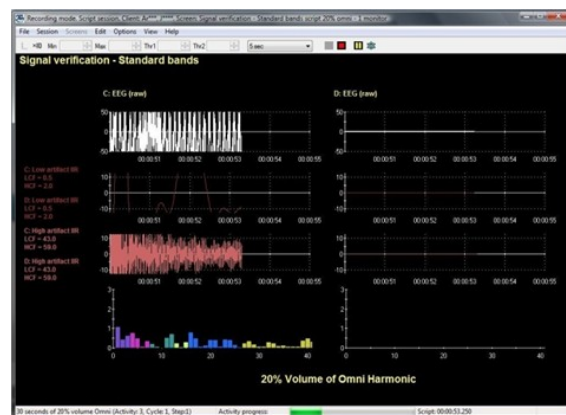


Fibromyalgia, Chronic Fatigue
& Anxiety Disorders

Format and Content of the Webinars

Each lecture in the online series introduces Dr. Swingle's QuickQ & BrainDryvr methods. Each topic provides 60 minutes of online instructions designed to help newcomers learn what has been shown to work from experience and evidence-based research. Participants receive lecture notes. The QuickQ & BrainDryvr series of lectures cover:

- Biofeedback for the Brain
- Depression and Mood Disorders
- Attention and Learning Disorders
- Fibromyalgia, Chronic Fatigue & Anxiety Disorders



All lectures are designed to provide guidance for both professionals and members of the public with special interest in the topics covered.

Schedule

Dr. Swingle's webinars are offered on the third Wednesday of January, April, September, and November; 4 x 60-minute lectures per year. The webinar will be presented from 4:00 to 5:00 pm Eastern Standard Time.

Benefits of BFE Online Lectures

- Learn the latest developments in the field
- Hear a new perspective on mental health
- See scientific evidence of changes in the brain
- No travel expense
- Learn from the comfort of your home or office

Fee

The introductory fee for each of Dr. Swingle's webinars in the QuickQ and BrainDryvr series is US\$69 per participant. The entire series of 4 webinars can be purchased for US\$199.

Registration & Payment Information

To register, please visit the "Events" page of the BFE website at <http://www.bfe.org/events.html>. Payment can be made using Visa, MC or PayPal. After registration, you will receive a confirmation email containing information about joining the webinar.

System Requirements

To attend a BFE online webinar, PC-based attendees require Windows 2000, XP Home, XP Pro, 2003 Server, Vista or Windows 7. Mac-based attendees require Mac OS x 10.4 (Tiger) or newer.

Accreditation

At this time, there is no accreditation for Dr. Swingle's webinars. Steps are being taken to secure Continuing Education Units for these webinars with the American Psychological Association and the Biofeedback Certification Institute of America (BCIA). For inquiries, contact accreditation@bfe.org, or Dr. Swingle's team directly at blueswingle@gmail.com.



Paul G. Swingle, Ph.D., is a Fellow of the Canadian Psychological Association and was Lecturer in Psychiatry at Harvard Medical School from 1991 to 1998. Professor Swingle was Chairman of the Faculty of Child Psychology at the University of Ottawa from 1972 to 1977, and Clinical Supervisor from 1987 to 1997. He has also taught at McGill University, Dalhousie University and McMaster University. He is a Registered Psychologist in British Columbia and is (BCIA) Certified in Biofeedback and Neurotherapy. Since 1997 he has been in a private practice in Vancouver, British Columbia. His most recent book, "Biofeedback for the Brain" (2008), was published by Rutgers University Press. Swingle and Associates also offers training workshops in Vancouver and at other locations

around the world. The hands-on workshops offer training in a wide range of clinical treatments, including many adjunctive therapeutic procedures that are synergic with neurotherapy.

Webinar 1: January 2010 - Biofeedback for the Brain

Wednesday, January 20th 2010, Time: 4:00 pm - 5:00 pm Eastern Standard Time

This 1-hour webinar introduces you to the wide range of disorders treated by Dr. Swingle at his clinic in Vancouver, Canada. Topics covered include clinical psychoneurophysiology and the QuickQ & BrainDryvr method. Dr. Swingle will review in detail the initial brain assessments and treatment procedures for a wide spectrum of disorders including seizures, autistic spectrum disorders, attention and learning disorders, defiance disorders, as well as developmental delay, traumatic brain injury, and other trauma.

Webinar 2: April 2010 - Depression & Mood Disorders

Wednesday, April 21st 2010, Time: 4:00 pm - 5:00 pm Eastern Standard Time

This 1-hour webinar shows how Dr. Swingle's QuickQ & BrainDryvr method is used to treat depression and includes examples of some of the many clients that Dr. Swingle has seen at his clinic. Topographic EEG reports combined with the QuickQ assessment are shown. Reported case studies show how the brainwaves change over time with Dr. Swingle's psychoneurophysiologic therapy.

Webinar 3: September 2010 - Attention & Learning Disorders

Wednesday, September 22nd 2010, Time: 4:00 pm - 5:00 pm Eastern Standard Time

This 1-hour webinar shows how Dr. Swingle's QuickQ & BrainDryvr method is used to treat attention deficit disorder and learning disorders using case studies of both children and adults treated in Dr. Swingle's Vancouver clinic. Brainwave patterns associated with the different forms of attention and learning disorders are reviewed and the relevant braindriving protocols to treat the various forms of these disorders are discussed.

Webinar 4: November 2010 - Fibromyalgia, Chronic Fatigue & Anxiety Disorders

Wednesday, November 24th 2010, Time: 4:00 pm-5:00 pm Eastern Standard Time

This 1-hour webinar offers Dr. Swingle's insights into the neurotherapeutic treatment of the symptoms associated with mild traumatic brain injury and the anxiety disorders. The different EEG patterns related to symptoms and characteristics of fibromyalgia and chronic fatigue are reviewed. Dr. Swingle provides data from male and female patients and explains the use of braindriving with these clients.

Online Courses for Professionals

The BFE also offers online courses to the professionals who are new to the use of EEG biofeedback using Dr. Swingle's methods. Each 6-hour online topic is the equivalent of a 1-day workshop. The online series introduce Dr. Swingle's QuickQ & BrainDryvr method. Each topic provides 6 hours of instructions designed to help newcomers learn what has been shown to work from experience and evidence-based research.

For inquiries, contact Dr. Swingle's team directly at blueswingle@gmail.com.

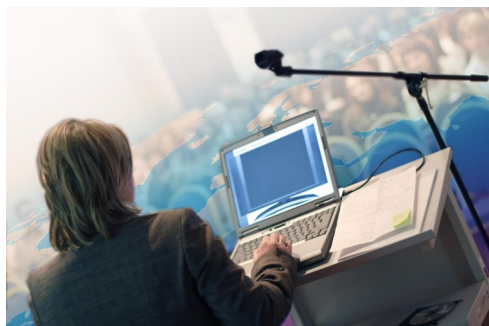
SUPPORTED BY THE LEARN FROM THE BEST PROGRAM

IMPORTANT NOTE: The views expressed in these webinars are those of the lecturer. Any and all claims for the efficacy of biofeedback beyond relaxation and muscle re-education are NOT endorsed by the foundation.



2010 International Online Lecture Series

The BFE is proud to announce the 2010 International Lecture Series. Dr. Swingle's lecture on January 20th is also part of this series which includes lectures from a variety of presenters in the fields of Neurofeedback and Biofeedback. The cost for each 60-minute lecture in this series is US\$89.90. The introductory price for a subscription to all ten lectures is US\$599.00.



- ◆ **QuickQ and BrainDryvr**—Paul G. Swingle, Ph.D.
- ◆ **Physiologic Dentistry**—Jeff Hindin, DDS
- ◆ **Telemedicine**—Dr. Howard Glazer
- ◆ **ProGolf**—Wes Sime, Ph.D.
- ◆ **Setting Up for Clinical Success**—Lynda Thompson, Ph.D. & Michael Thompson, MD
- ◆ **Optimizing Performance & Health**—Vietta S. Wilson, Ph.D.
- ◆ **Biofeedback: From Basics to Mastery**—Erik Peper, Ph.D.
- ◆ **Heart Rate Variability**—Don Moss, Ph.D.
- ◆ **Virtual Reality**—Stephane Bouchard, Ph.D.
- ◆ **Developments in Neurofeedback**—Vince Monastra, Ph.D.

IMPORTANT NOTE: The views expressed in these webinars are those of the lecturer. Any and all claims for the efficacy of biofeedback beyond relaxation and muscle re-education are NOT endorsed by the foundation

For more information or to register for this series please contact info@bfe.org.



P.O. Box 555 3800 AN, Amersfoort The Netherlands
BFE-IREP

Carol Meyers, Education Manager education@bfe.org
Fax: +1 514 489 8251 Tel: +1 518 632-1018