



**BIOFEEDBACK FOUNDATION OF EUROPE**  
*The Foundation for Learning™*  
**ONLINE COURSE**

# Setting Up For Clinical Success



## **COURSE DESCRIPTION**

This intermediate level online course for licensed health professionals and researchers assumes that participants have the prerequisite knowledge covered either of the entry level Introduction to Neurofeedback courses entitled "Simple EEG Measurement" or "Assessment and Training Methods". This course reviews the use of EEG equipment and the essentials of the "Setting Up For Clinical Success Suite" software designed by Lynda Thompson, Ph.D. and Michael Thompson, M.D. Lesson 1 reviews the essentials of setting up the EEG recording equipment, loading the software, and the steps toward recording an initial assessment and training session. Lesson 2 starts with a review of the collected EEG data and reviews the different assessment and training screen within the software. Lesson 3 discusses the integration of additional biofeedback modalities (e.g., HRV) with one- and two-channel EEG feedback. Lesson 4 introduces some of the clinical applications including ADHD, Dyslexia, Depression, and Anxiety.

## **WHO SHOULD TAKE THIS COURSE?**

This online course is intended for licensed health professionals who are interested in learning how to use EEG equipment for neurofeedback. The course has been submitted to the Biofeedback Certification Institute of America (BCIA) for continuing education accreditation for 6-hours.

## **ONLINE COURSE INSTRUCTORS**

### ***David Hagedorn, Ph.D.***

Dr. David Hagedorn has graduate degrees and certifications in Applied Behavior Analysis, Gerontology, and Clinical Psychology. He has been involved in clinical research and practice since 1989 providing psychological treatment and assessment to inpatient and outpatient children, adolescents, adults, and older adults. He has directed and developed residential behavioral treatment programs, has supervised and directed behavior analytic assessment and treatment for those with developmental and learning disabilities and traumatic brain injury. He has additional experience with the more severely mentally ill in State Mental Hospitals. He has directed and developed treatment and assessment services for brain damaged adolescents and adults. His experience assessing learning and development disabilities is extensive to include the assessment of very low functioning nonverbal clients up to very high functioning college and graduate students. He is clinical director of an anti-aging and integrative medicine company in Oklahoma and Texas and has private practice offices also in these states. He has presented training seminars on behavioral management topics and on neurodegenerative conditions. Dr. Hagedorn is a certified practitioner and international trainer of biofeedback/neurofeedback.

### ***Genevieve Moreau***

Geneviève Moreau is a doctoral student of Neurofeedback at the Université de Québec à Montréal in Montreal, Quebec. She is an active researcher with particular interests in the clinical applications of Neurofeedback on children suffering from learning disabilities. Geneviève instructs courses in both English and French.

## **COURSE OBJECTIVES**

The course objective is for participants to become familiar and comfortable with the features and flexibility of the BFE "Setting Up For Clinical Success Suite". By the end of the course, participants will be able to initiate a training or assessment screen, collect the EEG data, save the data for analysis, and create data trend or progress graphs. Additionally, participants will be able to integrate other biofeedback modalities and initiate training plans for some of the more basic clinical conditions.

### **LESSON 1**

Lesson 1 covers the use of the EEG equipment and the loading of Setting Up For Clinical Success software. The use of wires and related hardware will also be discussed and illustrated followed by the first of many walk-through demonstrations of starting an open session and saving session data.

### **LESSON 2**

Lesson 2 starts with an overview of the Infinity program using the Setting Up for Clinical Success Suite display screens and channel sets. This lesson will teach the use of the different channel sets for assessment and training and show how an EEG recording can be played back using a different channel set. This lesson will also demonstrate the collection of data for analysis. The selection of data statistics and data collection will be discussed.

### **LESSON 3**

Lesson 3 will introduce the use of one- and two-channel EEG assessment and training as well as scripted sessions and the integration of additional biofeedback modalities as temperature, EDR, EMG, respiration, and heart rate.

### **LESSON 4**

Lesson 4 will discuss some common clinical applications that can be addressed using the Setting Up For Clinical Success Suite software. Specifically, biofeedback applications for depression, anxiety, AD/HD, and Dyslexia will be discussed.

## **LEARNER OUTCOMES**

At the end of this 6-hour course participants will be able to apply at least a referential montage for assessment or training over the cingulated. Participants will also be able to select statistics, save and record the EEG data for analysis, graph data trends, and review saved EEG data using different channel sets. They will also be able to make basic decisions about training clients presenting with different clinical conditions.

## **REQUIREMENTS & CERTIFICATION INFORMATION**

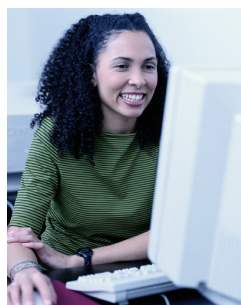
The course requires the use of Internet so participants must have a computer running Windows XP or Vista with access to a high speed internet connection. Participants also need a telephone close to the computer or a Skype user ID, headset and microphone. Members of BFE International Research & Education Project (IREP) teams are also required to have access to an BioGraph Infiniti system and hardware. To receive a certificate of completion, participants are required to attend all four lessons and complete an evaluation form at the end of the course.

## **REGISTRATION, PAYMENT & ACCREDITATION**

To register and pay for an online course, please visit the courses page of the BFE website – [www.bfe.org](http://www.bfe.org) select the series of your choice: Neurofeedback (blue), Biofeedback (Red), Muscle Biofeedback (Green). Then, select the course of your choice and register using PayPal or the registration form to secure your place in the course right away. Online courses are limited to four participants and are filled on a first come first served basis. For more information, please contact [info@bfe.org](mailto:info@bfe.org). The BFE intends to submit an application to the Biofeedback Certification Institute of America for accreditation of the course.

## **HOW DOES THE BFE SUPPORT TRAINING?**

The BFE organizes regional workshops in Europe, North America and Overseas as well as online courses for clinicians and researchers anywhere in the world. The instruction given at these regional training workshops and online courses are provided in the form of limited edition CD "Suites". Each CD-Suite comprises software for clinical practice and course notes. Some suites also include other documents such as clinical guides, research papers, presentations, patient education, and patient data. The BFE considers the basic sciences and behavioral and social sciences inseparable from technical knowledge in their influence on the professional person. Participants in workshops and online courses are encouraged to attune clinical practice to modern knowledge as it continuously becomes available and to strengthen the habits of critical inquiry and balanced judgment that denote the truly professional and scientific person. For further information, please contact the BFE Workshop Manager at [workshops@bfe.org](mailto:workshops@bfe.org).



## **BENEFITS OF BFE ONLINE COURSES**

- See real-time physiologic data recorded and reviewed in class
- No travel expense, learn from the comfort of your home or office
- Limited number of participants (4-max) providing a hands-on training experience
- Qualified instructors with various specializations
- Adaptation of course lessons to the individual needs of the participants
- Extensive technical assistance throughout the course