



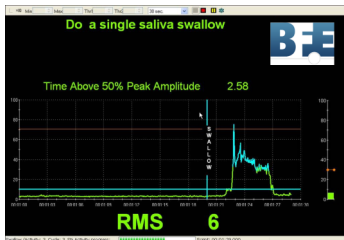
DYSPHAGIA SUITE

CATRIONA STEELE PHD
S-LP(C), CCC-SLP, REG. CASLPO

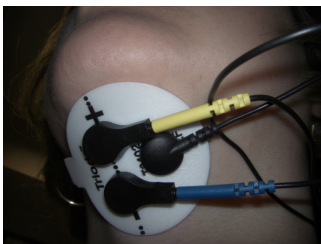


Limited Edition Software Suite

The Dysphagia Suite was designed by a team of clinicians, as led by Catriona Steele Ph.D., as a surface electromyography (sEMG) biofeedback rehabilitation tool for swallowing re-education and training in dysphagia (swallowing impairment). It is based on the latest research and experience of the Swallowing Rehabilitation Research Lab at the Toronto Rehab Institute in Ontario, Canada. Speech language pathologists will particularly find this software of interest for guiding their patients through treatment protocols involving Effortful Swallows and Mendelsohn Manoeuvres. The software should only be used with patients who present with radiographically confirmed pharyngeal residue (i.e., incomplete clearance of food or liquid from the throat during swallowing) related to a recent stroke or acquired brain injury. The suite includes:



- Four rehabilitation protocols (assessment, regular-effort swallow, effortful-swallow, and Mendelsohn manoeuvres) that guide the therapist and patient through 5 swallow attempts per exercise set, over a period of 2.5 minutes. Statistics of interest are recorded during the session and instructions are embedded directly in the protocols.
- Suite documents, that include a methodology written by Dr. Steele, software manual for all technical aspects of the equipment preparation and software navigation, sample client data and case study examples.
- Four pre-recorded lessons, that provide 6-hours total of instruction on using the Dysphagia Suite software and associated equipment. All aspects of the theory, electrode placement, software navigation, treatment methodology and outcome are discussed by Dr. Steele in these recordings.
- A French edition of the Dysphagia Suite software can also be purchased. The suite's accompanying documentation remains in English.



Education & Training Opportunities

Dr. Steele has pre-recorded 6-hours worth of lessons for using the Dysphagia Suite with patients. Those recordings are included with the Dysphagia Suite purchase. The BFE can also currently offer additional online lessons/meetings designed to meet your diverse education and training needs:

- **3-Hour Dysphagia Grand Rounds:** this options allows speech language pathologists to attend live 60-minute online sessions scheduled monthly for three consecutive months and take the opportunity to ask Dr. Steele or team members your questions about different methods, share new information and discuss assessment case examples from practice. Demonstrations of recorded data and other information set in an interactive framework provide up-to-date, relevant summaries that can immediately be put to use.

If you are interested in arranging other types of qualified instructor-guided lessons, then the BFE would gladly do so. Please contact the BFE Shop (shop@bfe.org) do make such arrangements.



For more Information or Questions: To purchase the suite and/or education & training, go to the BFE Shop:

greendysphagia@gmail.com

www.bfe.org/buy



DYSPHAGIA SUITE

CATRIONA STEELE PHD
S-LP(C), CCC-SLP, REG. CASLPO



BioGraph Infiniti Software

BioGraph Infiniti Software is the core of all current and future Thought Technology Biofeedback and Psychophysiology products. It provides a multimedia rich graphical experience, while capturing and analyzing raw data. It includes all the features and functions required to run our specialized application Suites and offers the ability to customize your own screens and suites using the Developer Tool . **BioGraph Infiniti version 5.1.4** is designed to provide full compatibility with the latest Windows 7 operating system.



Choose the Encoder to Meet Your Needs

You only need one of the encoders and its associated sensors to run the software:

- **ProComp Infiniti encoder** is the eight-channel, multi-modality encoder that has all the power and flexibility you need for real-time, computerized biofeedback and data acquisition in any clinical setting.
- **ProComp 5 encoder** is similar to the ProComp Infiniti, but only records data from up-to five channels. (the software is originally designed for the ProComp Infiniti, but works identically with the ProComp 5)
- **MyoTrac Infiniti encoder** allows for the measurement of two channels of high-resolution surface electromyography (SEMG) and perform EMG-triggered electrical stimulation. Two EMG sensors are built directly into the encoder, although the suite only requires recording data from one sensor.
- **Myotrac3 encoder** is a highly sensitive dual channel sEMG biofeedback device. Two EMG sensors are built directly into the encoder, although the suite only requires recording data from one sensor.

Select Associated Sensor Necessary for use with Encoder

Depending on the selected encoder, you may need to purchase one sensor:

- **MyoScan-Pro sensor (x1)** is a pre-amplified surface electromyography sensor for measuring muscular tension. This sensor is required for the ProComp Infiniti and ProComp 5 encoders. It comes with EMG extender leads.



No sensor purchase is required for the MyoTrac Infiniti or Myotrac 3 encoders, since the sensors are built directly into the encoders and come with the extender leads

Disposable Triode Electrodes

Disposable electrodes are necessary for all sensors, whether the sensor is built-into the encoder or purchased separately. The **triode disposable electrode** is used for the EMG extender lead & sensor placement with the Dysphagia Suite.

