



Biofeedback Federation of Europe Neurofeedback Software Suites

SPECIALIZED APPLICATION SCRIPTS

Michael Thompson, MD & Lynda Thompson, Ph.D.

One of the leading tools for the treatment of clients with a wide variety of conditions. Includes training scripts for specific types of disorders, to guide the therapist and client through treatment.

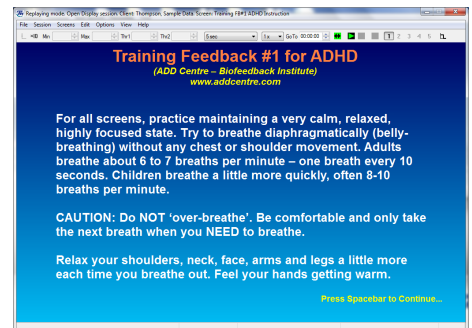
This suite goes beyond *Setting Up for Clinical Success* to introduce fixed time-based protocols that combine a sequence of display screens and detailed instructions. The Thompson scripts are based on a wealth of clinical experience: the authors treat patients from four to seventy years of age. These range from executives and athletes who want to optimize their performance to children with ADHD, learning disabilities, Asperger's, autism, Tourette's, and even adults suffering from anxiety, depression, and head injuries. *Specialized Application Scripts* can be used to focus your practice and make the most out of neurofeedback and biofeedback.

The BFE Specialized Application Scripts team can be reached at blueapplication@gmail.com.

Also by the Thompson's...

Setting Up for Clinical Success

A companion to *Specialized Application Scripts*, this suite features over two hundred display screens with configurations that match training goals and pair them with the most common bandwidths and biofeedback modalities that are used for training a variety of disorders.



For more information, visit our website at www.bfe.org or email us at shop@bfe.org

Technical Requirements

The *Specialized Application Scripts* suite is compatible with the Thought Technology BioGraph® Infinity™ system—version 5 or version 6.

Compatible Encoders:

FlexComp™ Infinity™ Encoder, ProComp™ Infinity™ Encoder, ProComp2™ Encoder

Sensors Required:

EEG-Z Sensors (2) includes: EEG monopolar/bipolar kit with DIN cable (x2), 2-channel electrode connectivity kit, MyoScan-Pro, BVP, Respiration, Skin Conductance and Temperature sensors*

*see tech sheet online for full details